

Lunar Maria

Bossa

Intro

Cm7

D \flat 7

Cm7

D \flat 7



A

Cm7

Fm7

B \flat 7

E \flat 7



A \flat M7

D7

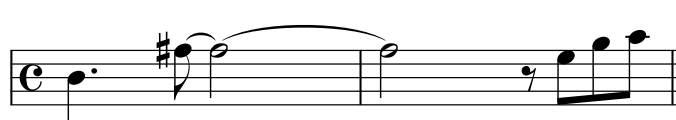
1.
GM7

G7



2.
GM7

E7



B

Am7

D7

GM7



Gm7

C7

Fm7

G7



A'

Cm7

Fm7

B \flat 7

E \flat 7



A \flat M7

D7

GM7

G7



Solo

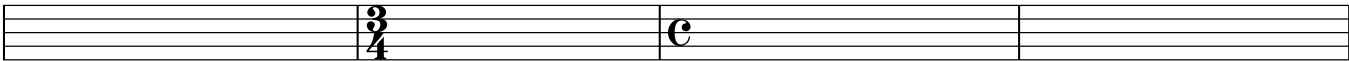
A

Cm7

Fm7

B \flat 7

E \flat 7



A \flat M7

D7

GM7

G7



Cm7

Fm7

B \flat 7

E \flat 7

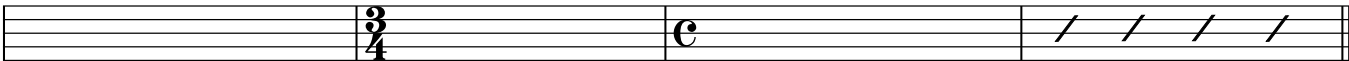


A \flat M7

D7

GM7

E7



B

Am7

D7

GM7

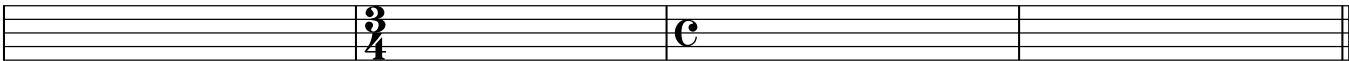


Gm7

C7

FM7

G7



A'

Cm7

Fm7

B \flat 7

E \flat 7



A \flat M7

D7

GM7

G7

