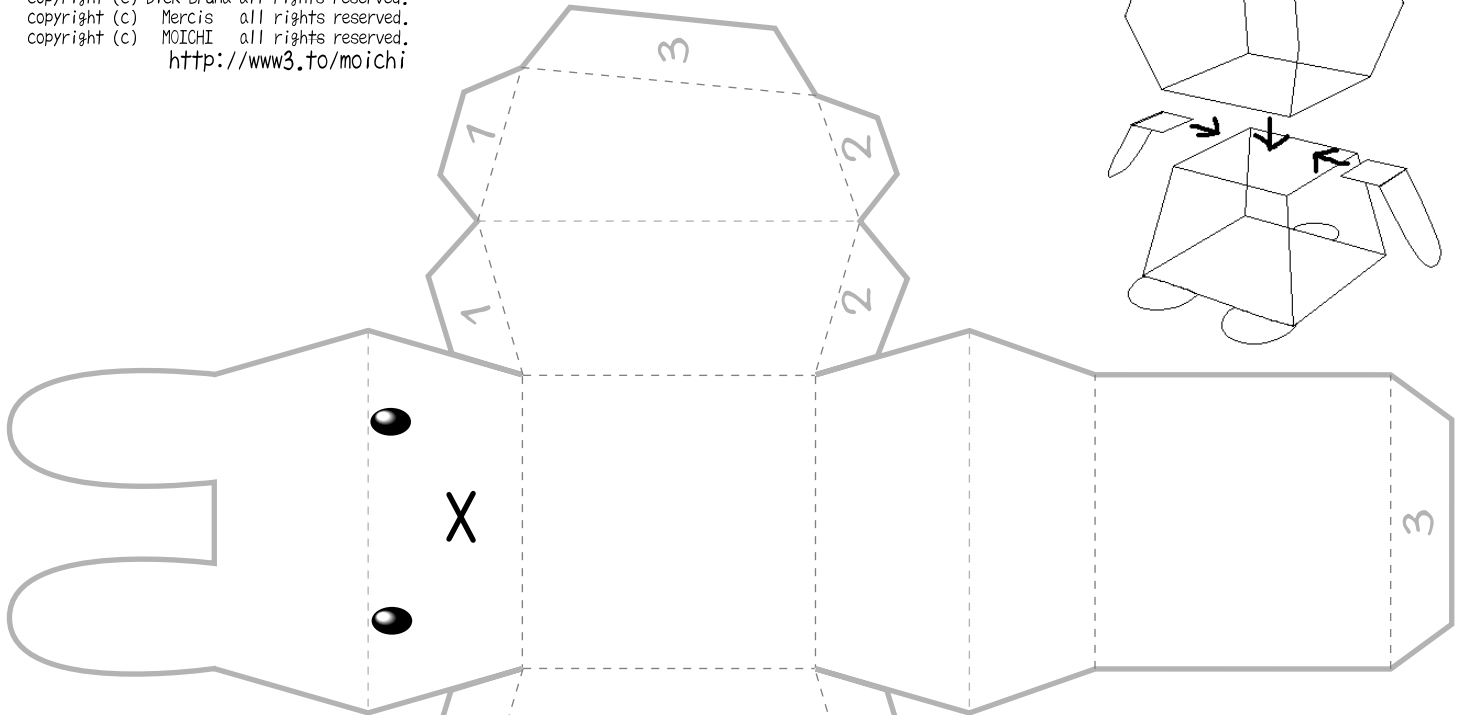
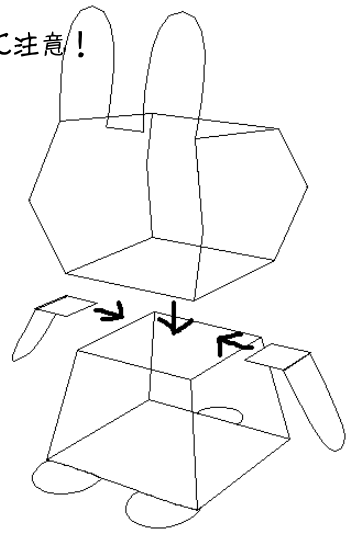


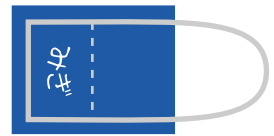
MIFFY

copyright (c) Dick Bruna all rights reserved.
 copyright (c) Mercis all rights reserved.
 copyright (c) MOICHI all rights reserved.
<http://www3.to/moichi>

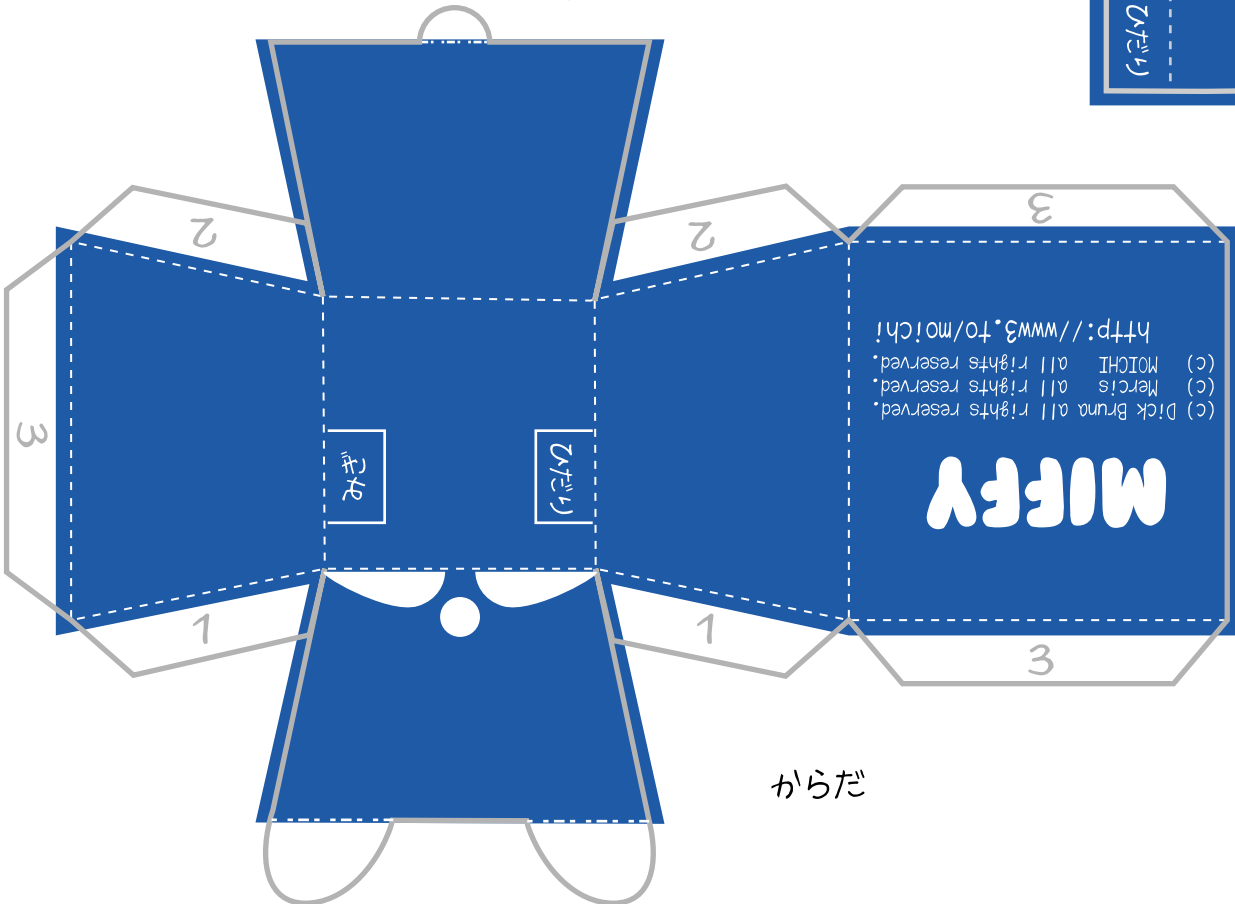
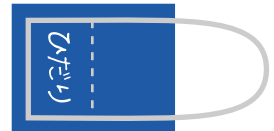
1. 実線——にそって切り取る。けがをしないように注意!
2. 点線-----を山折り、鎖線-----を谷折り。
折り目をしっかり付けると上手に作れるよ!
3. 番号順にのり付けして完成!



あたま



うで



からだ